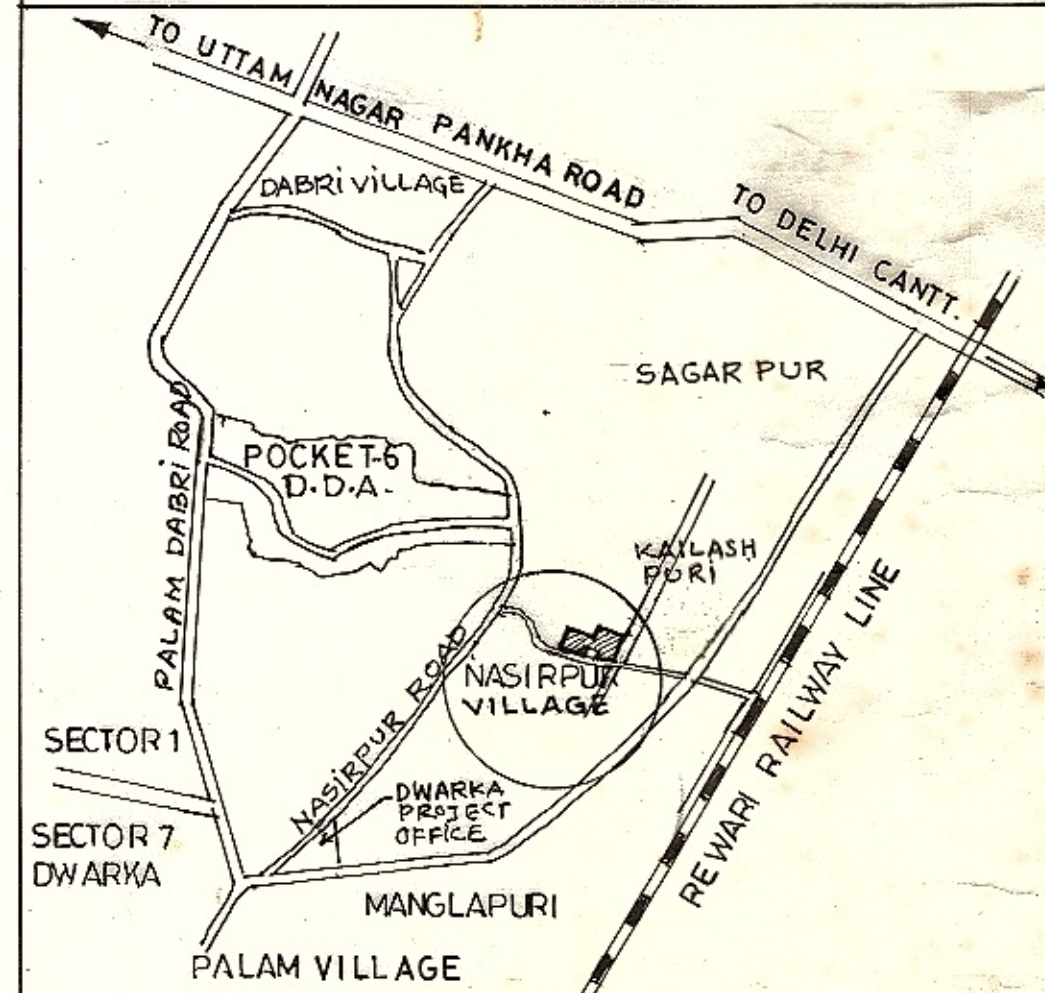
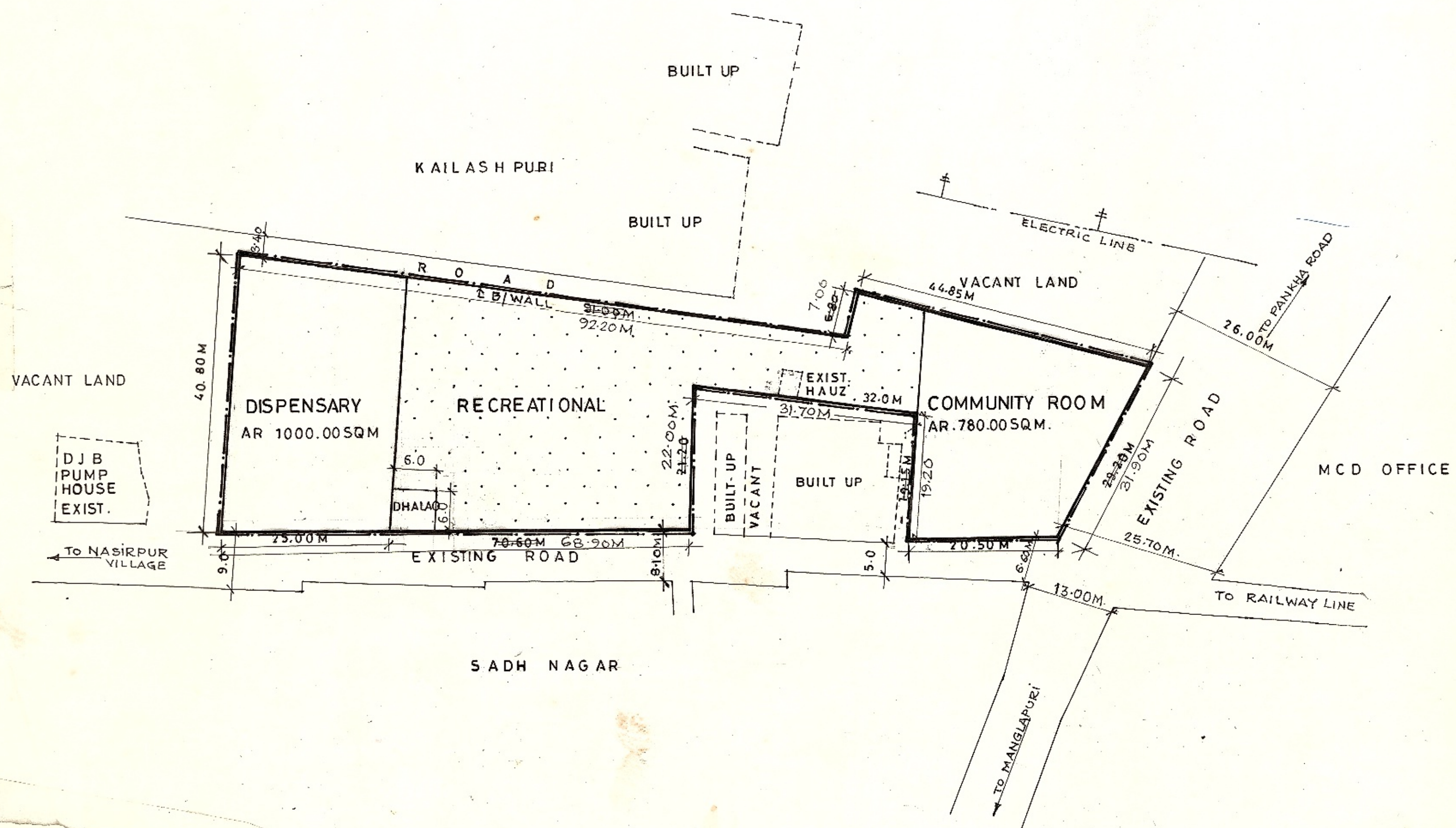


D. D. A.

DWARKA PROJECT



KEY PLAN (NOT TO SCALE)



AREA STATEMENT

TOTAL AREA OF POCKET 3735.65 SQM.

PROPOSED FACILITIES AREA IN SQM

- DISPENSARY 1000.00 SQM.
- COMMUNITY ROOM 780.00 SQM.
- RECREATIONAL 1955.65 SQM

NOTES :

1. THE LAND IS TAKEN OVER BY THE ENGINEERING WING WD-6, DDA, NEW DELHI AND IS FENCED AS INTIMATED VIDE LETTER NO. F1(208) AE(P) WD-6/DDA/10 DT. 5.1.05.
2. THIS LAYOUT PLAN HAS BEEN PREPARED ON THE BASIS OF P.T. SURVEY SUPPLIED BY SURVEY UNIT DWARKA ON DATED 25.02.05.

THE LAYOUT PLAN HAS BEEN APPROVED IN THE 243RD SCREENING COMMITTEE MEETING HELD ON 29.11.2005 VIDE ITEM NO 103:2005 IN FILE NO. F1(450) 2005/PLG/DWK/RTJ. THE SAME HAS BEEN CERTIFIED BY JT. DIR.(PLG) AND VERIFIED BY DY. DIR.(ARCH) COORDN.

LAYOUT PLAN OF GAON SABHA POCKET-11 NASIRPUR VILLAGE. (KHASRA NO. 613)

SCALE 1:500 DRG. NO. DWK/NASIRPUR/LOP/PKT-11/JUNE 05/51

PLG. D/MAN	PLG. ASSTT.	DATE	N
------------	-------------	------	---

ASSTT. DIR. (PLG)	JT. DIRECTOR PLG	DIRECTOR (PLG)
-------------------	------------------	----------------

DELHI DEVELOPMENT AUTHORITY

THE FEASIBILITY REPORT HAS BEEN RECEIVED FOR THE GAON SABHA POCKETS 6, 7, 8, 9, 10, 11 & 12 (NASIRPUR) FROM THE EX. ENGINEER WD-6 VIDE LETTER NO. F1(450)2005/PLG/DWK/PTJ DATED 13.3.06 AND THE SAME HAS BEEN INCORPORATED. THE REPORT HAS BEEN KEPT IN FILE NO. F1(450)2005/PLG/DWK/PTJ ON PAGE NO. 23/C TO 27/C.